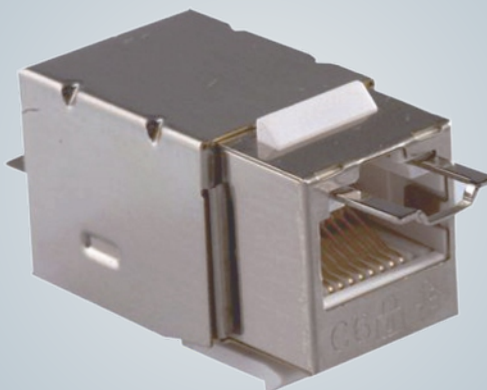


QUICKlock45 RJ45-Jack C6SQ1

Cat.6 Class E shielded



PRODUCT DESCRIPTION

Shielded Cat. 6 Keystone RJ45-Jack with QUICKlock45 function, operates as security against unallowed or rather unintentional patch processes. Most suitable for Voice, Video and Data-Applications of class E/ 250MHz up to 1 GbE. Fits in all standard Keystone patch panels and special outlets. LSA-connecting technology, optional with our easy crimping tool. Locking or unlocking with the help of the QUICKlock45 key.

DATA PERFORMANCE

Cat.6 250MHz 1GbE / (ISO/IEC) / Class E

VALID NORMS

EN 50173 2.Edition, Class E
ISO/IEC 11801 AM1 und AM2, Class E
EIA/TIA 568 C.2 Cat.6

CONSTRUCTION

Measurements	1,8x1,7x3,7 cm (HxWxD)
Housing	Zinc di- casting housing, nickel plated
Cable acceptance	AWG 22-26
PCB	FR4, UL-94V0
Contacts	50µ gold plated
Tension	30≤N
Insertion cycle	min. 750
Assembly cycles	max. 10
Isolation resistance	500mΩ
Contact resistance	≤20mΩ
Max. ampacity	1,5 Amps
Operation temperature	-40° bis 70°C

ACCESSOIRES (OPTIONALLY)

- QUICKlock45 Crimping tool (rust- free metal with PVC handle)
- QUICKlock45 Key

20707



20704



ORDERING INFORMATION

Type number	20701
Item description	C6SQ1 QUICKlock45 Modul Cat.6 shielded